



This project is an integrated project that comprises teaching, research and academic services in the term of social engagement.



This project was conduct to improved swine breeder management.

Development of sow management and efficient of productivity on farm safety and standaed to create career security



This project was conduct to improved sow performance that was importance to keep the cost of producing crossbreed piglets to a minimum to enable to maximize profitability at sale.

This year, community enterprise begins selling purebred boar semen (40 dose) and piglet.

Increasing the income of community enterprise about 400 bath/month. And, the average income of members increased to 17,000 bath/person/production cycle or **40,800 bath/year/sow**

1.4.1 and 1.4.3



This project support agricultural management to produce sustainable food. Pork and pork products represent an importance part of the diet in the world. Good farm management is one of more practice to produce the quality of pork and pork products for consumer.



2.5.1, 2.5.2 and 2.5.3

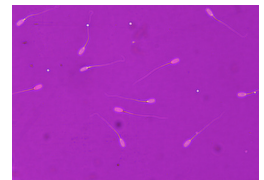


This project integrated work on community enterprise and University.

- National agencies
- Community agencies
- Local enterprise



Regular monitoring of boar semen quality is important, that affected to sow productivity.



17.2.1